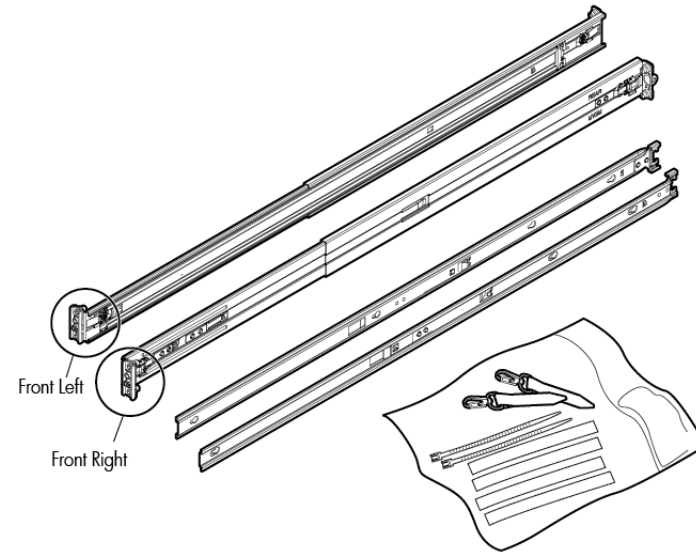


Quick Deploy Rail System Installation Instructions

Hardware kit contents

WARNING: To reduce the risk of personal injury or damage to the equipment, at least two people are required to lift the server during installation or removal.

IMPORTANT: When installing the rack rails, be sure they are oriented Front Left and Front Right, as indicated on the rails.



Item	Hardware	Quantity/Tool
Y Not shown	User provided	You must provide the following: <ul style="list-style-type: none"> Screws to secure the slide mounting bracket assemblies in a threaded-hole rack Cage nuts for a round-hole rack

In addition to the supplied items, you might need:

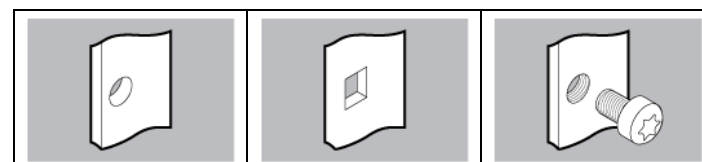
- Screws that fit a threaded-hole rack
- The appropriate screwdriver for the screws

Overview

This rack hardware kit supports a variety of products in round-, square-, or threaded-hole racks. Use the legend to identify installation steps appropriate to the type of rack.

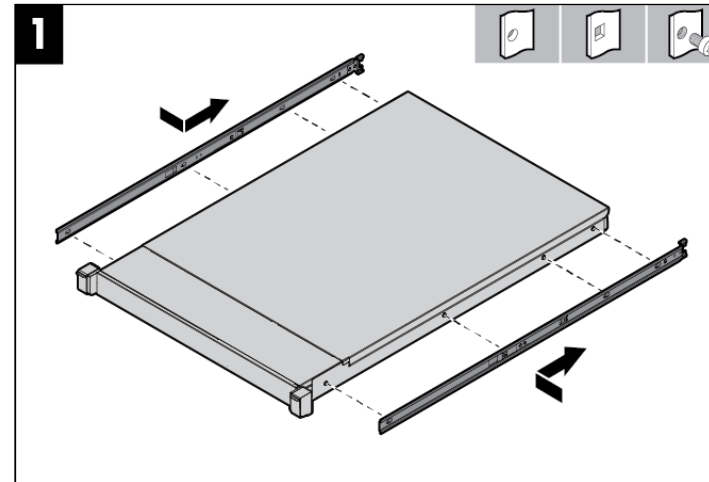
IMPORTANT: If you are shipping the server installed in a rack, see the additional instructions located in "Preparing the product for integrated shipping in a rack" before proceeding.

Rack identification legend



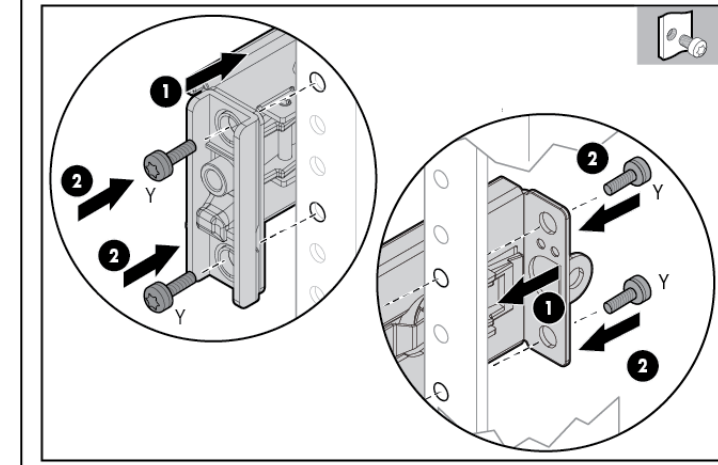
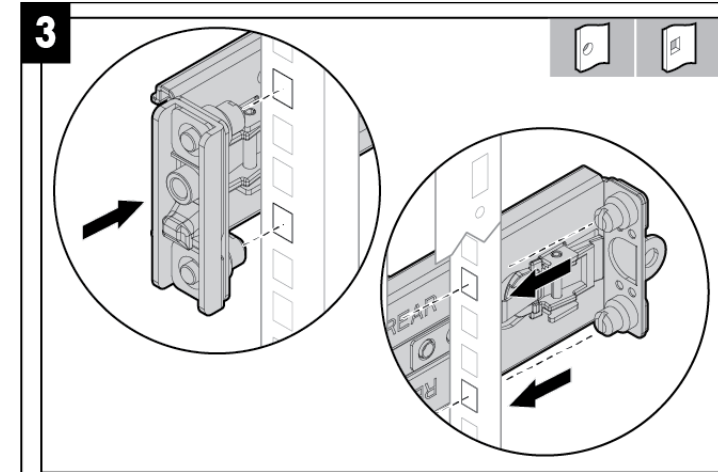
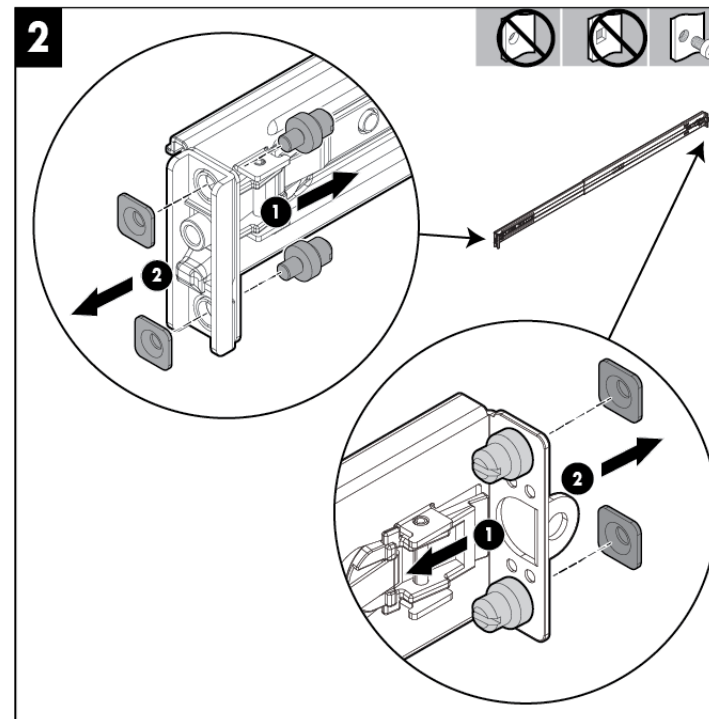
Round-hole racks	Square-hole racks	Threaded-hole racks
No tools required	No tools required	—

Installing the rail kit into a rack



WARNING: To avoid risk of personal injury or damage to the equipment, do not stack anything on top of rail-mounted equipment or use it as a work surface when extended from the rack.

CAUTION: Always plan the rack installation so that the heaviest item is on the bottom of the rack. Install the heaviest item first, and continue to populate the rack from the bottom to the top.

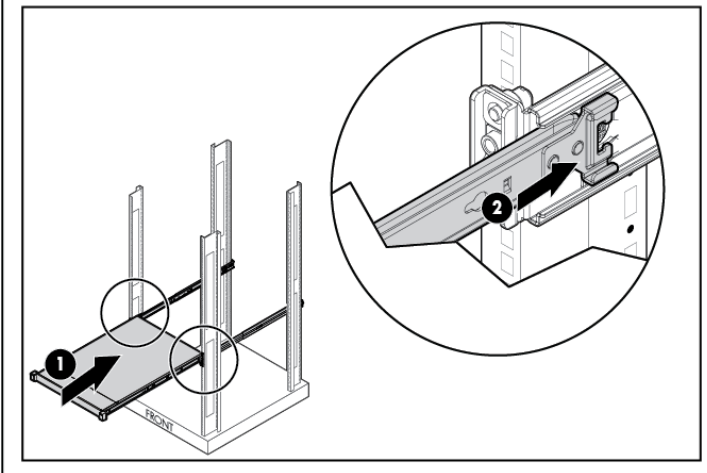
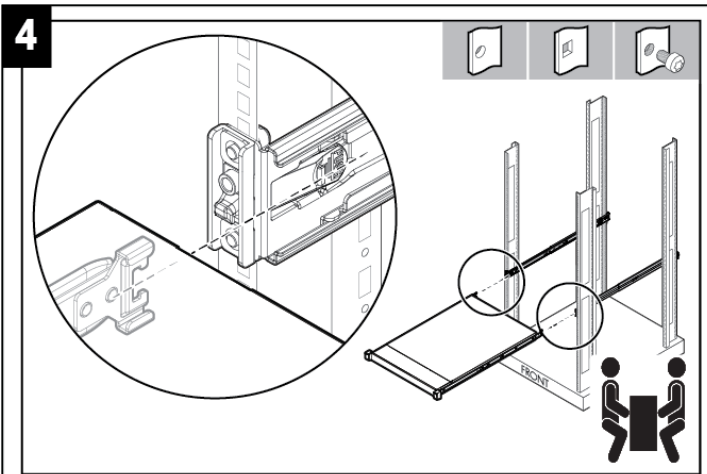


WARNING: To reduce the risk of personal injury or equipment damage, be sure that the rack is adequately stabilized before sliding the inner slides into the slide mounting bracket assemblies.

WARNING: To reduce the risk of personal injury or damage to the equipment, at least two people are required to lift the server during installation or removal.

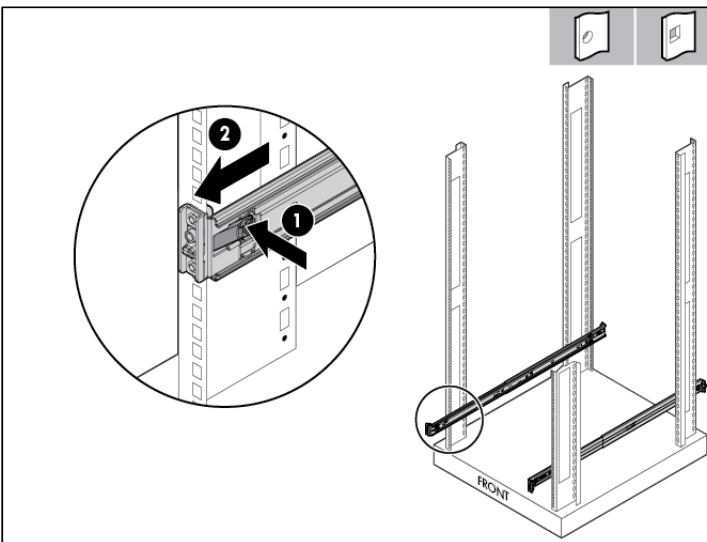
CAUTION: Be sure to keep the product parallel to the floor when sliding the inner slides into the slide mounting bracket. Tilting the product up or down could result in damage to the slides.



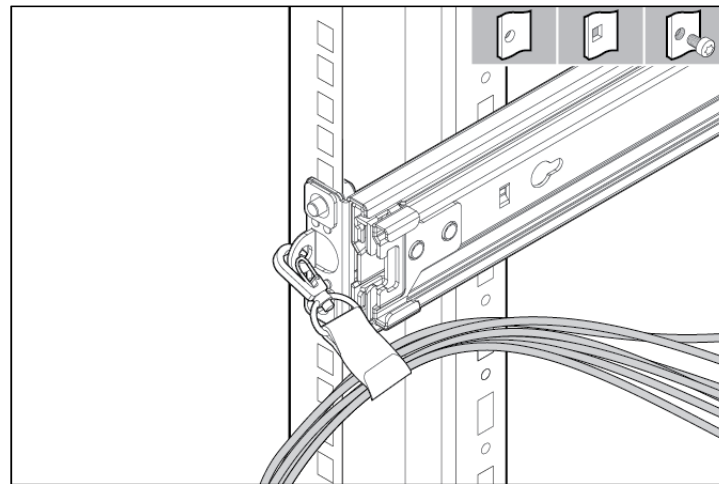


Removing the rail

When removing the rail from the rack, always remove the front of the rail first.



Securing the cables



Connecting the power cords

After completing all installation and cable management procedures, you can connect the power cords to the facility power source.

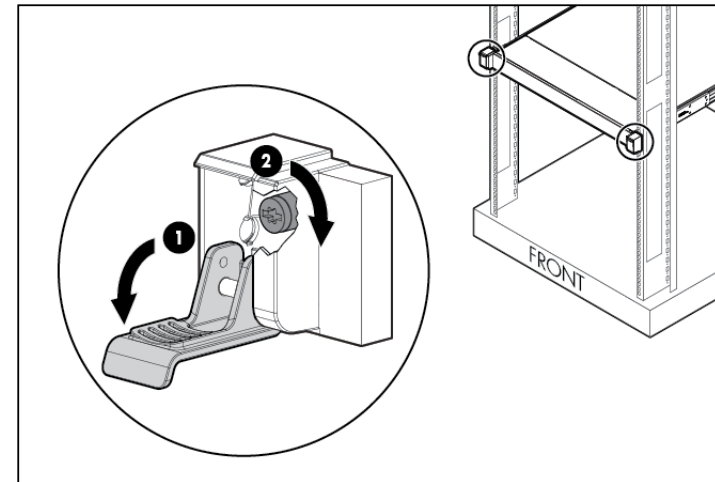
- ⚠ WARNING:** To reduce the risk of electric shock or damage to the equipment:
- Do not disable the power cord grounding plug. The grounding plug is an important safety feature.
 - Plug the power cord into a grounded (earthed) electrical outlet that is easily accessible at all times.
 - Unplug the power cord from the power supply to disconnect power to the equipment.
 - Do not route the power cord where it can be walked on or pinched by items placed against it. Pay particular attention to the plug, electrical outlet, and the point where the cord extends from the server.

The installation is complete.

Preparing the product for integrated shipping in a rack

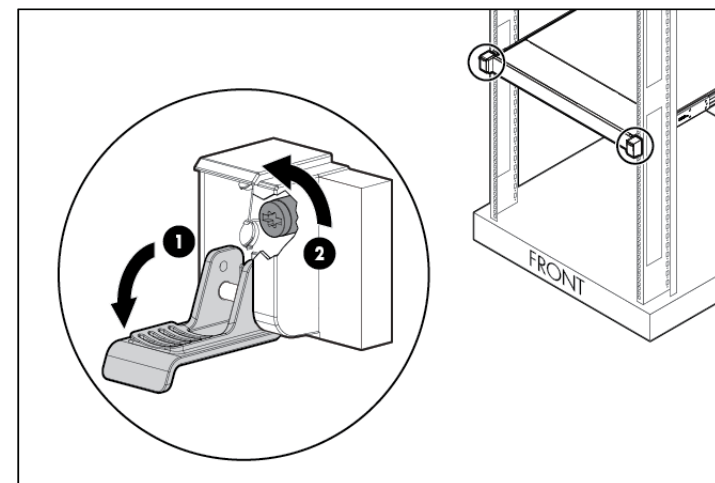
- ✍ IMPORTANT:** You must provide screws to secure the slide mounting bracket assemblies in a threaded-hole rack.

NOTE: Use the integrated shipping hardware included with this kit to prepare a square-hole rack for integrated shipping.



Loosening the shipping screws

To slide the server out of the rack, open the latches and loosen the shipping screws.



Documentation feedback

Hewlett Packard Enterprise is committed to providing documentation that meets your needs. To help us improve the documentation, send any errors, suggestions, or comments to Documentation Feedback (<mailto:docsfeedback@hpe.com>). When submitting your feedback, include the document title, part number, edition, and publication date located on the front cover of the document. For online help content, include the product name, product version, help edition, and publication date located on the legal notices page.